

# ALU 100 NEO PRO ET3 Glass Synchron



Hanger  
RX100A, 4 pieces



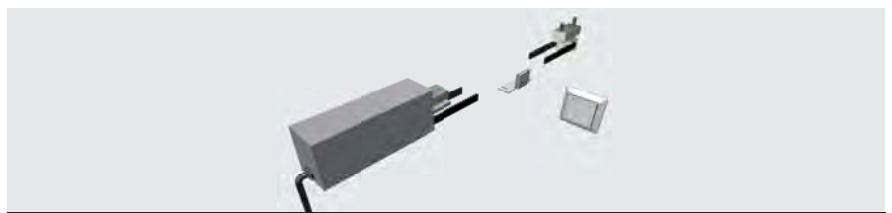
Glass clamp GLM  
274087M, 4 pieces



Adjustable stopper  
SX100, 4 pieces



Floor guide  
T-Guide Glas, 2 pieces



ET3-80-EU Motor

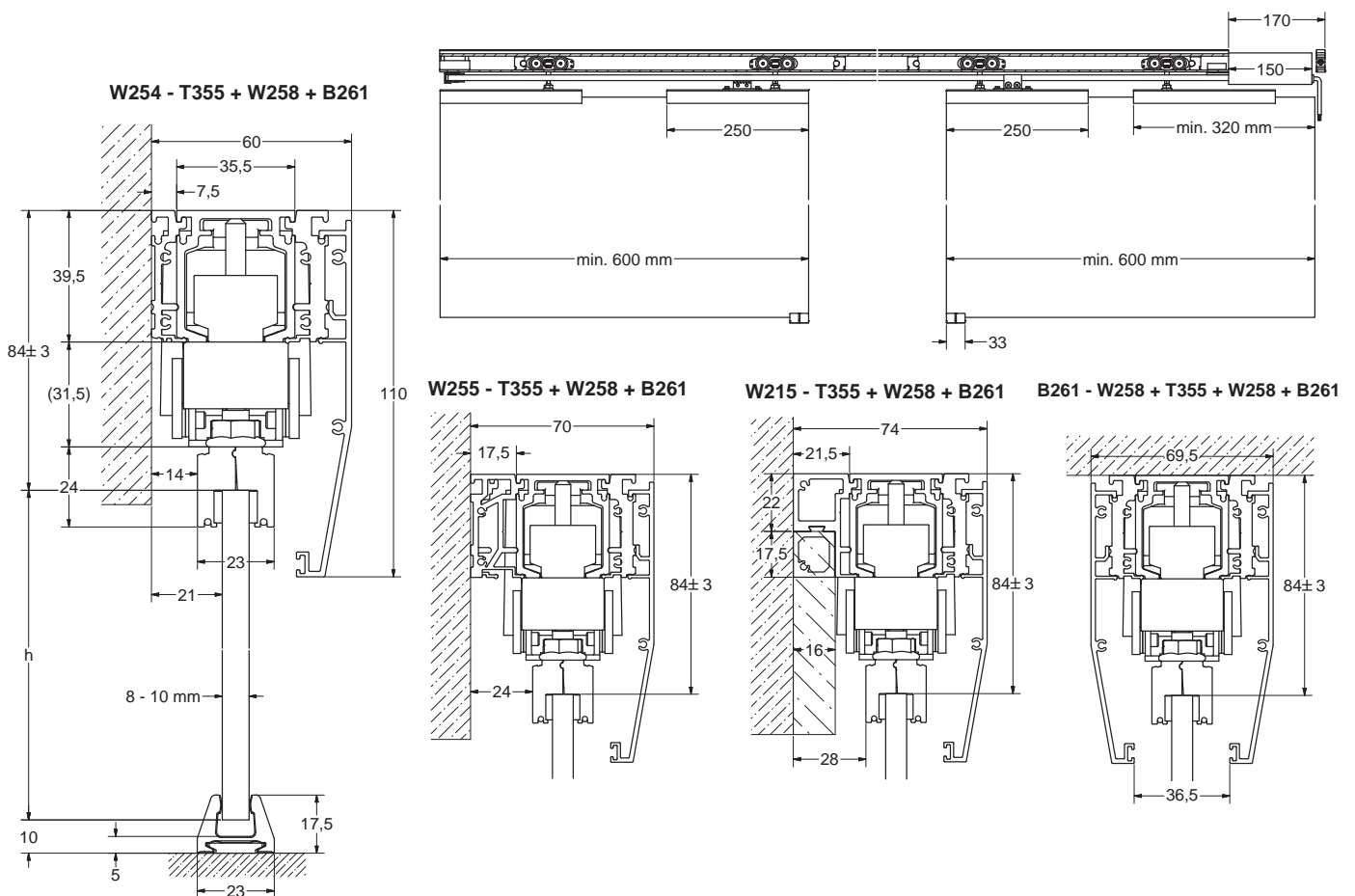
With control unit, power supply unit, incl. 12 meter toothed belt, deflection unit, adapter T365 18 mm, toothed belt clamp, 2 pieces and button with cover frame



Tool

## Technical Notes

|                            |  |
|----------------------------|--|
| <b>Maximum Door Weight</b> | 80 kg  |
| <b>Height</b>              | 84 ± 3 mm                                    |
| <b>Door Thickness</b>      | 8 - 10 mm (12 mm upon request)               |
| <b>Minimum Door Width</b>  | 600 mm                                       |
| <b>Voltage</b>             | 24 V via external power supply (100 - 240 V) |



## Technical Documents

Installation instructions, technical drawings and further information for this product can be downloaded at [www.tiger.de](http://www.tiger.de). You will also find news and general information about all TIGER products.