

ALU 100 NEO Wood



This complete set offers a modern entry-level version for all door and sliding elements made of wood. Fully equipped with all the necessary components, this set is the door opener to our premium line.



Hanger
RX100A, 2 pieces



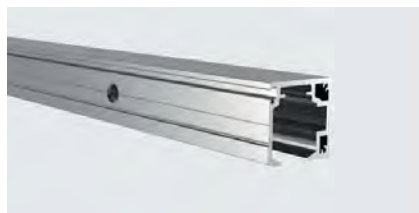
Flange
8069, 2 pieces



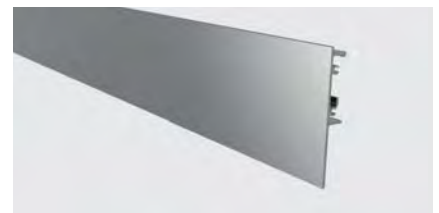
Adjustable stopper
SX 100H, 2 pieces



Floor guide
T-Guide Holz



Track
T365, 2250 mm



Cover
B256, 2250 mm



End caps set
177427-24



Fastening material

Complete Set ALU 100 NEO Wood

Article Number

Anodized aluminium, EV1, silver

NEO100Holz

Anodized aluminium, C31, stainless-steel-look

NEO100HolzC

Technical Notes

Maximum Door Weight	100 kg
Height	63 ± 3 mm
Door Leaf Thickness	25 - 45 mm
Maximum Door Width	1125 mm
Minimum Door Width	500 mm

Classification according to DIN EN 1527

Use Category	Durability	Door Weight	Fire Resistance	Safety	Corrosion Resistance	Security	Door Type	Initial Friction
-	6	2	0	-	0	-	1	3

